



www.tehtools.com

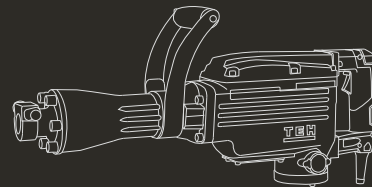
Demolition Hammer

TH6514

TH8515

TH9517

To Be Your Exclusive Helper



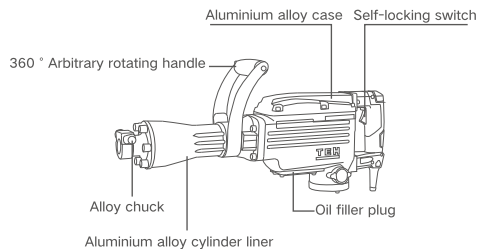
TEH

®

TECHNICAL SPECIFICATION

| Model | TH6514 | TH8515 | TH9517 |
|-------------------|-----------|-----------|-----------|
| Rated voltage | 220V 50Hz | 220V 50Hz | 220V 50Hz |
| Rated input power | 1450w | 1550w | 1700w |
| Impact rate | 1850bpm | 1900bpm | 2000bpm |
| Impact force | 35J | 45J | 45J |

COMPONENTS AND ACCESSORIES



Accessories included:

- 1 socket wrench
- 2 hexagonal wrench: 5M,6M
- 1 flat chisel: 30x410x24mm
- 1 pointed chisel: 30x410x24mm
- 1 oil tube
- 1 instruction manual
- 2 spare carbon brushes

SAFETY INSTRUCTIONS

WARNING ⚠

Read all instructions. Failure to follow all instructions listed below may result in electric shock, fire and/or other serious injury. The term “power tools” in all of the warnings listed below refers to mains-operated (corded) power tool or battery operated (cordless) power tool.

WORK AREA

- a) Keep work area clean and well lit. Cluttered and dark areas invite accidents.
- b) Do not operate power tools in explosive atmospheres, such as in the presence of flammable liquids, gases or dust. Power tools create sparks which may ignite the dust or fumes.
- c) Keep children and bystanders away while operating a power tool. Distractions can cause you to lose control.

ELECTRICAL SAFETY

- a) Power tool plugs must match the outlet. Never modify the plug in any way. Do not use any adapter plugs with earthed (grounded) power tools. Unmodified plugs and matching outlets will reduce risk of electric shock.
- b) Avoid body contact with earthed or grounded surfaces such as pipes, radiators, ranges and refrigerators. There is an increased risk of electric shock if your body is earthed or grounded.
- c) Do not expose power tools to rain or wet conditions. Water entering a power tool will increase the risk of electric shock.

- d) Do not abuse the cord. Never use the cord for carrying, pulling or unplugging the power tools. Keep cord away from heat, oil, sharp edges or moving parts. Damaged or entangled cords increases the risk of electric shock.
- e) When operating a power tool outdoors, use an extension cord suitable for outdoor use. Use of a cord suitable for outdoor use reduces the risk of electric shock.

PERSONAL SAFETY

- a) Stay alert, watch what you are doing and use common sense when operating a power tool. Do not use a power tool while you are tired or under the influence of drugs, alcohol or medication. A moment of inattention while operating power tools may result in serious personal injury.
- b) Use safety equipment. Always wear eye protection. Safety equipment such as dust mask, non-skid safety shoes, hard hat, or hearing protection used for appropriate conditions will reduce the risk of personal injuries.
- c) Avoid accidental starting. Ensure the switch is in the off-position before plugging in. Carrying power tools with your finger on the switch or plugging in the power tools that have the switch on invites accidents.
- d) Remove any adjusting key or wrench before turning the power tool on. A wrench or a key to a rotating part of the power tool may result in personal injury.
- e) Do not overreach. Keep proper footing and balance at all times. This enables better control of the power tool in unexpected situations.
- f) Dress properly. Do not wear loose clothing or jewellery. Keep your hair, clothing and gloves away from moving parts. Loose clothes, jewellery or long hair can be caught in moving parts.
- g) If devices are provided for the connection of dust extraction and collection facilities, ensure these are connected and properly used. Use of these devices can reduce dust related hazards.

POWER TOOL USE AND CARE

- a) Do not force the power tool. Use the correct power tool for your application. The correct power tool will do the job better and safer at the rate for which it was designed.
- b) Do not use the power tool if the switch does not turn it on and off. Any power tool that cannot be controlled with the switch is dangerous and must be repaired.
- c) Disconnect the plug from the power source before making any adjustments, changing accessories, or storing power tools. Such preventive safety measures reduce the risk of starting the power tool accidentally.
- d) Store idle power tools out of the reach of children and do not allow persons unfamiliar with power tool or these instructions to operate the power tool. Power tools are dangerous in the hands of untrained users.
- e) Maintain power tools. Check for misalignment or binding of moving parts, breakage of parts, breakage or parts and any other condition that may affect the power tools operations. If damaged, have the power tool repaired before use. Many accidents are caused by poorly maintained power tools.
- f) Keep cutting tools sharp and clean. Properly maintained cutting tools with sharp cutting edges are less likely to bind and are easier to control.
- g) Use the power tool, accessories and tool bits etc., in accordance with these instructions and in the manner intended for the particular type of power tool, taking into account the working conditions and the work to be performed. Use of the power tool for operations different from intended could result in a hazardous situation.

SERVICE






- a) Tool service must performed only by qualified personnel. Service or maintenance performed by unqualified personnel could result in risk of injury.
- b) When servicing a tool, use only identical replacement parts. This will ensure that the safety of the power tool is maintained.

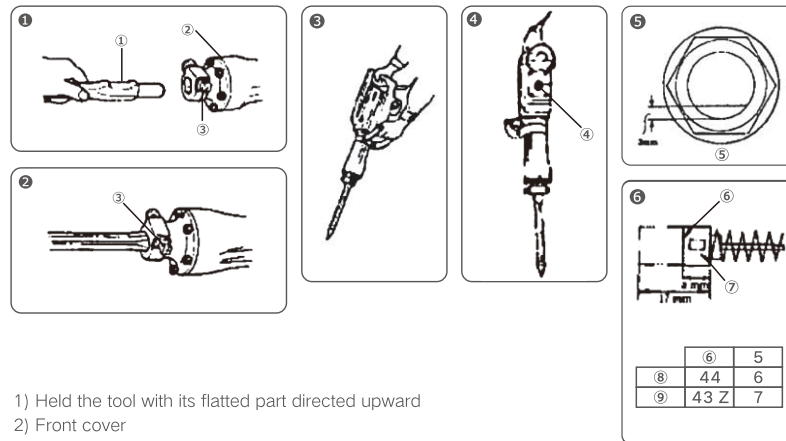
ADDITIONAL SAFETY INSTRUCTIONS FOR DEMOLITION HAMMER

- a) Use only accessories recommended for this electric hammer chisel. Follow instructions that accompany accessories. Use of improper accessories may cause injury to the operator or damage to the rotary hammer.
- b) If any part is missing or damaged, do not plug the chisel into the power source until the missing or damaged part is replaced.
- c) To avoid fire or toxic reaction, never use gasoline, naphtha, acetone, lacquer thinners or similar highly volatile solvents to clean the tool.

IMPORTANT NOTE

SYMBOLS

-  Read the manual
-  Warning
-  Wearing protection
-  Double insulation
-  WEEE marking



1) Held the tool with its flattened part directed upward

2) Front cover

3) Stop lever

4) Oil gauge

Check the oil quantity by holding the body upright

5) Resupply oil when the oil level drops to less than approx. 3mm

6) Wear limit

7) No. of carbon brush

8) Usual carbon brush

9) Auto-stop carbon brush

| | | |
|---|------|---|
| | 6 | 5 |
| 8 | 44 | 6 |
| 9 | 43 Z | 7 |

ASSEMBLY & OPERATION INSTRUCTION

APPLICATIONS

Crushing concrete, chipping, digging, and squaring.(Application Examples).

Installation of piping and wiring, sanitary facility installation, machinery installation, water supply and drainage work, interior jobs, harbor facilities and other civil engineering work.

PRIOR TO OPERATION

1.Power source

Ensure that the power source to be utilized conforms to the power requirements specified on the product nameplate.

2.Grounding

This tool should be grounded while in use to protect the operator from electric shock. The tool is equipped with a three conductor cord and grounding type plug to fit the proper grounding type receptacle. The green (or green and yellow) wire to a live terminal.

3.Power switch

Ensure that the power switch in the OFF position. If the plug is connected to a power receptacle while the power tool will start operating immediately, inviting serious accident.

4.Extensional cord

When the work area is removed from the power source, use an extension cord of sufficient thickness and rated capacity. The extension cord should be kept as short as practicable.

5.Feeding oil (refer to the paragraph on oil feeding)

Prior to using the power tool, remove the oil gauge and do not fill the oil tank with the provided oil . (Although the oil tank is built in, it contains only a small volume of oil when shipped from the Works.)

6.Mounting a tool

Note: When handling bull point, cold chisel and other accessories, standard tools are recommended for better operation.

- 1) Rotate the stop lever 180 degree in a clockwise direction while pulling it toward you. Next, insert the tool shank into the hexagonal hole on the front cover. (Fig.1)
 - 2) Clamp the tool by turning the stop lever half a turn in the opposite direction. (Fig.2)
- (Note) When removing the tools. Follow the about procedure in reverse order.

HOW TO USE THE HAMMER (Fig.3)

- 1) After placing the tip of in the base hole. Switch ON.

In some cases. It is necessary to punch the up of the bit against the crushing position forcibly in order to begin the striking stroke.This is not due to malfunction of the tool. It means that the safe guard mechanism against no-load striking is working.

- 2) By utilizing the weight of the machine and by firmly holding the hammer with both hands, one can effectively control the subsequent recoil motion.

Preceed at a moderate mark-rate, the use of too much force will impair efficiency.

Caution: Sometimes the tool does not begin the striking stroke even when the motor rotates because the oil has become Thick.

If the tool is used at low temperatures or if it is used running in for five minutes in order to warm it up.

OIL FEEDING

Caution: prior to oil feeding, always disconnect the plug from the power supply receptacle. Since an oil chamber is built in this Demolition Hammer, it can be used for approximately 20 days without supplying lubricating oil, assuming that the Hammer is used continuously 3~4 hours daily.

Feed oil into the oil tank as described below before using this Hammer. (See Figs. 4 and 5)

- 1) Just before no oil is visible in the oil gauge windows when the device is held upright, feed oil to warm it up.
- 2) Before feeding oil, use the provided wrench to remove the oil gauge. Be careful not to lose the rubber packing attached below the oil gauge.
- 3) Check the oil level once daily, confirming that oil is filled.
- 4) After feeding oil, securely clamp the oil gauge.

Note: As an optional accessory, oil for the Demolition Hammer is sold separately. Use this oil when oil in the tank is depleted. Shell Oil Co. ROTELLA #40 (engine oil) can also be used. This oil is sold at Shell filling stations most anywhere.

PRECAUTIONS ON USING HAMMER ▲

- 1) **Wear protective glasses to protect your eyes.**
- 2) **Wear a mask when turning your head upward.**
- 3) **Use earplugs to keep your ears noise-free while working.**

- 4) Properly set the bit holder.
- 5) Since the bit becomes very hot during operation, exercise extremes very hot.
- 6) Be sure to use side handle.
- 7) Safe operation depends on one's table posture.
- 8) At the start of work, confirm the oil supply and screw tightening.
- 9) When working at a highly elevated location, pay attention to articles and persons below.
- 10) Before starting breaking or chipping a wall, floor, or ceiling, thoroughly confirm that no items, such as an electric cable or conduit are buried inside.
- 11) **Wear protective shoes to protect your feet.**

MAINTENANCE AND INSPECTION

1. Inspecting the tool

Since use of a dull tool will cause motor malfunctioning and degraded efficiency, when it or replace with a new one without delay when abrasion is noted.

2. Inspecting the mounting screws

Regularly inspect all mounting screws and ensure that they are properly tightened. Should any of the screws be loose, retighten them immediately. Failure to do so could result in serious hazard.

3. Maintenance of the motor

The motor unit winding is the very "heart" of the power tool . Exercise due care to ensure the winding does not become damaged and/or wet with oil or water,

4. Inspecting the carbon brushes (Fig.6)

The motor employs carbon brushes which are consumable parts. When they become worn to or near" wear limit", it could result in motor trouble .When an auto-stop carbon brush is equipped, the motor will stop automatically. At that time, replace both carbon brushes with new ones which have the same carbon brush nosy, shown in the figure. In addition always keep carbon brushes clean and ensure that they slide freely within the Brush holders.

Replacement steps the carbon brush can be removed by removing the cap cover, cap rubber and brush cap in that order at the interior.

Note:

Due to continuing program of research and development, the specifications herein are subject to change without prior notice.

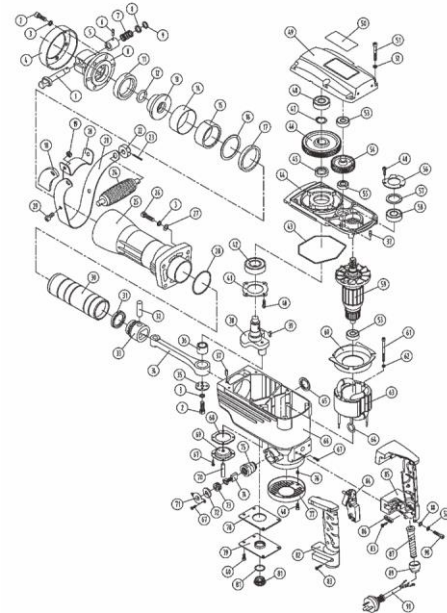
WARNING ⚠

Every time you use the machine you should verify the following:

- 1) Hex bit is secure.
- 2) Oil level is full.
- 3) Select to the function you want to do before you engage in the proposed operation
- 4) All safety apparel. Safety glasses safety shoes. Safety gloves. Ear defenders and safety hat are being worn.

Failure to adhere to these safety rules can greatly increase the chances of injury.

PRODUCT EXPLODED VIEW



EXPLODED VIEW PART LIST

| No. | NAME | Qty | No. | NAME | Qty |
|-----|-----------------------------------|-----|-----|----------------------------------|-----|
| 1 | Stop lever | 1 | 18 | Holder | 2 |
| 2 | Hexagon Socket Cap Screws M8X30 | 7 | 19 | Hexagon Socket Cap ScrewsM8 | 2 |
| 3 | Washer ϕ 8 | 11 | 20 | Clamp | 1 |
| 4 | Iran Caps | 1 | 21 | Holder | 1 |
| 5 | Spring case | 1 | 22 | Handel Cap | 2 |
| 6 | Cylinder house ϕ 4X18 | 1 | 23 | Cylindrical pin ϕ 3X30 | 2 |
| 7 | Srping case | 1 | 24 | Rubber Handle | 1 |
| 8 | Washer ϕ 13X ϕ 18X2.5 | 1 | 25 | Front Placket | 1 |
| 9 | Washer ϕ 12.5X ϕ 18X1.5 | 1 | 26 | Hexagon Socket Cap Screws M8X40 | 4 |
| 10 | Iran Head | 1 | 27 | Washer ϕ 8 | 4 |
| 11 | Bumper (S) | 1 | 28 | Packing Ring ϕ 62X ϕ 2 | 1 |
| 12 | Ring ϕ 23.5X ϕ 5.2 | 1 | 29 | Hexagon Socket Cap Screws M8X16 | 2 |
| 13 | Shank Sleeve | 1 | 30 | Air Cylinder | 1 |
| 14 | Rubber Sleeve | 1 | 31 | Piston Ring | 1 |
| 15 | Ring | 1 | 32 | Piston Pin | 1 |
| 16 | Ring ϕ 57.5X ϕ 68.5X | 1 | 33 | Pistion | 1 |
| 17 | Damper (L) | 1 | 34 | Link Rod | 1 |

| No. | NAME | Qty | No. | NAME | Qty |
|-----|----------------------------------|-----|-----|-----------------------------------|-----|
| 35 | Washer (5 holes) | 1 | 55 | Bearing 6001 (ABS) | 1 |
| 36 | Bearing Nk1820 | 1 | 56 | 65-6203Bearing Gland (3 ϕ L) | 1 |
| 37 | Cylindrical Pin ϕ 5X12 | 2 | 57 | Washer ϕ 29.5X ϕ 40X2.5 | 1 |
| 38 | eccentric shaft | 1 | 58 | Bearing 6203 (SYBS) | 1 |
| 39 | Semicircular Key 4X6.5X16 | 2 | 59 | Armature | 1 |
| 40 | Hexagon Socket Cap Screws M5x14 | 13 | 60 | Ring | 1 |
| 41 | 65- 6205 Bearing gland (4 Holes) | 1 | 61 | Hexagon Socket Cap Screws M5X60 | 2 |
| 42 | Bearing 6205 (CXJSD) | 1 | 62 | Washer ϕ 5 | 2 |
| 43 | Gasket Ring | 1 | 63 | Stator | 1 |
| 44 | Midle Cap | 1 | 64 | Spring | 2 |
| 45 | Ring | 1 | 65 | Washer | 2 |
| 46 | Big gear | 1 | 66 | Gear Box | 1 |
| 47 | Ring ϕ 22 | 1 | 67 | Cross head screws M4X12 | 9 |
| 48 | Bearing 6302 (CXJSD) | 1 | 68 | Wahser | 1 |
| 49 | Top Cap | 1 | 69 | Oil Bowl | 1 |
| 50 | Sticker | 1 | 70 | Oil Core | |
| 51 | Hexagon Socket Cap Screws M6X45 | 6 | 71 | Brush Holder Gland | 2 |
| 52 | Washer ϕ 6 | 10 | 72 | Brush Holder Washer | 2 |
| 53 | Bearing 6201 | 2 | 73 | Brush Holder Cap | 2 |
| 54 | Small Gear | 1 | 74 | Carbon | 2 |

| No. | NAME | Qty | No. | NAME | Qty |
|-----|--------------------------------|-----|-----|---------------------------------|-----|
| 75 | Brush Holder | 2 | 84 | Switch | 1 |
| 76 | Hexagon Socket Cap Screws M5X8 | 2 | 85 | Handle Switch Base | 1 |
| 77 | Rear Cover | 1 | 86 | Pressing Line Plate | 1 |
| 78 | Washer | 1 | 87 | Sleeve | 1 |
| 79 | Oil Cap | 1 | 88 | Washer ϕ 6 | 4 |
| 80 | Washer ϕ 20.5X ϕ 2 | 1 | 89 | Sleeve | 1 |
| 81 | Oilhole | 1 | 90 | Hexagon Socket Cap Screws M6X25 | 4 |
| 82 | Handle Cap | 1 | 91 | Cable conductor | 1 |
| 83 | Cross head screws ST4X16 | 6 | 92 | | |

WARRANTY CARD

Dear customers, the warranty service for purchasing TEH products is as follows:

Under normal use, the wear of the rotor steering gear is less than 0.2 mm within three months from the date of purchase. It is guaranteed that the damage is caused by the quality of the tool.

The following conditions occur during the warranty period, not covered by the warranty:

- Any valid legal document (single ticket) certifying the date of purchase
- Any damage caused by natural wear and overload
- Any damage caused by the use of low-priced inferior accessories
- Any damage caused by improper carrying, transportation or storage
- Any product that has been opened, repaired, replaced, or modified by itself
- Any damage caused by misuse, beyond the scope of use of the tool, and failure to use and maintain in accordance with the instructions

 ladies/gentlemen : _____ employer : _____

contact number : _____ fax number : _____

contact address : _____

warranty record : _____

post code : _____

IMPORTANT NOTE

- The invoice and warranty card must be presented at the time of warranty.
- The fuselage number on the invoice is the same as the fuselage number on the warranty card.
- Once this warranty card is issued, if it is lost, it will not be reissued. Please keep it properly.

Note: The company reserves the right to amend the above provisions and has the final interpretation right in the case that the warranty service does not violate national laws.